



宏立機電設備有限公司

HONG LI E&M EQUIPMENTS COMPANY LIMITED

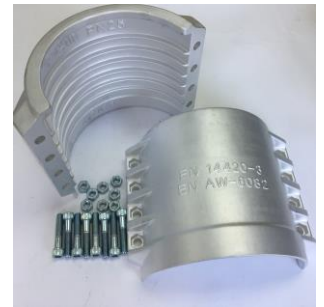
SAFETY CLAMP 安全管夾

Characteristic & Application 特點及應用

'Safety' clamps are specifically designed for use with EN ISO 14420 (DIN 2817) hoesetails fittings. The large rounded teeth inside the clamp halves securely grip the strong, tough hose cover, whilst the end of the clamp fits securely in to the groove on the hose tail.

This system is therefore double locked, also this clamps are light , so they are easy and safe to handle. Besides, safety clamps are rated to 16 Bar in all sizes.

安全管夾專門設計用於 EN ISO 14420 (DIN 2817) 套管接頭。管夾內部的大圓形齒可以牢固地夾緊喉管，堅固的軟管蓋，同時軟管可以牢固地夾於管夾末端凹槽中。因此，安全管夾能雙向鎖定喉管。此管夾輕巧，容易處理。另外，安全夾可承受壓力上限可高達 16 公斤。



Specification 產品規格

Model 型號	Application 可應用於
DIN 100x8	4" GORO Smooth Spiral Hose 4" GORO Heavy Duty Spiral Hose 4" WS150 Rubber Hose 4" CD70 Cement Discharge Hose
DIN 100x10	4" WS300 Rubber Hose 4" AW300 Rubber Hose
DIN 150x10	6" GORO Smooth Spiral Hose 6" GORO Corrugated Spiral Hose 6" GORO Heavy Duty Spiral Hose 6" WS150 Rubber Hose 6" CD70 Cement Discharge Hose
DIN 150x13	6" WS300 Rubber Hose
DIN 200x16	8" GORO Corrugated Spiral Hose 8" GORO Heavy Duty Spiral Hose 8" WS150 Rubber Hose 8" WS300 Rubber Hose 8" CD70 Cement Discharge Hose

可配合以下管件使用

		
DIN Camlock C+E DIN 快速接頭 C+E	Safety Clamp Insert with Victaulic Groove 溝槽式安全夾接頭	Victaulic Clamp 溝槽喉碼
需配合使用		